

## Children and Youth

Birth through Grade 6 & Grades 7 through 12

9:00, 10:15 & 11:30 AM

**Classes for all preschool and elementary age children are offered at 9, 10:15 and 11:30 AM.**

**Babies, Creepers, Toddlers Room B-112**  
For children ages birth through 24 months, this class offers a chance for young disciples to explore God's creation as they gain experience through interacting with each other and adults.

**Twos & Threes Room B-114**  
Children engage in active learning through sensory experience and reinforcement of concepts and activities related to Scripture.

**PreK-Kindergarten Room B-113**  
Children in this class engage in activities that expose them to Scripture and encourage a Christ-like life.

**Grades 1-6 (except for 11:30: see below)**

**1st-3rd Grades Room B-116**

**4th-6th Grades Room B-109**  
The children in these classes are grouped by age. During both hours, children will interact and examine spiritual concepts through stories, prayer, and various activities. They are challenged and encouraged to live their faith outside of church while nurturing relationships with Christ and each other.

11:30 AM

**Sign Language (1st-6th graders, Jun 1-Jul 20)  
Room C-118**

The elementary-aged students will be learning some basic signs, as well as signing along to popular worship songs. On July 20, they will be singing and signing a song at all 3 services. If you have any questions or comments, please contact Christina Bearden at [ChristinaB@parkwood.org](mailto:ChristinaB@parkwood.org)

*Children are encouraged to attend and sit with their parents during one of the worship services.*

## Youth Classes (Grades 7-12)

**All Youth Sunday School classes meet at 10:15 AM in Room C-124**

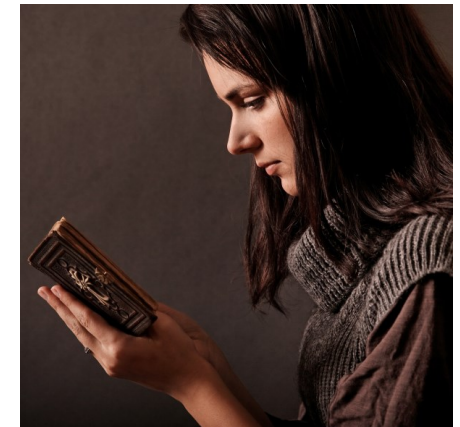
The focus of these classes is to immerse teenagers in God's story and to guide them as they create a relationship with Him by serving in His Kingdom. Students are encouraged to participate in an interactive Bible study.



8726 Braddock Road  
Annandale, Virginia 22003  
703.978.8160  
[www.parkwood.org](http://www.parkwood.org)



## Sunday Bible Study Classes and Small Groups



**Parkwood is a people's church.  
Its strength is its people;  
its mission is people.**

8726 Braddock Road  
Annandale, Virginia 22003  
703.978.8160  
[www.parkwood.org](http://www.parkwood.org)

# Adults

Unless otherwise noted, these classes continue throughout the year. Guests are encouraged to visit any class at any time.

## 9:00 AM Classes

### **Life Application: Davis Room A-100/A102**

This discussion group studies the Bible, one book at a time, seeking to apply Scripture to life.

### **Foundations of our Faith: TBD**

This class is for both old and new believers who are seeking a deeper understanding of the Bible. It introduces students to a sample of core beliefs of the Christian faith.

### **Divorce Care (offered periodically) TBD**

This class studies and encourages biblical directives for dealing with broken relationships.

### **Knowing God in a Personal Way (6-week class) TBD**

Specially designed for both regular and new members who are seeking to deepen their relationship with God.

## 10:15 AM Classes

### **Adult 2: Porter Room A-104/A106**

An in-depth study of the books of the Bible as the revelation of God's will to humanity, the standard of Christian character and experience, and a trustworthy record of God's acts in history.

### **Adult 3: Herrington Conference Room/C-206**

A fellowship of primarily "empty-nesters" who use the Formations study guides to apply Scripture to life issues.

### **Explore the Bible: Almond Rm A-101/A103**

A class of couples and singles who study the whole Bible, one book at a time, emphasizing how to apply truth to today's world. The class uses LifeWay's Explore The Bible curriculum.

### **Ladies Class: Camacho A-105**

A class for women who study the Bible to understand and apply God's timeless truth to today's changing world. Class uses the Formations curriculum.

### **Study of Scripture: Rust Prayer Parlor**

This discussion group focuses on the study of Scripture and how to apply it to our daily lives.

### **Spanish Language Bible Study: Velasquez Fellowship Hall**

This class focuses on the study of Scripture and how to apply biblical principles to daily living. *Esta clase se enfoca en el estudio de las Escrituras y cómo aplicar los principios bíblicos a la vida diaria.*

### **Young Adults: Patton C-208**

A class in which single young adults are engaged in open discussion of the Bible and its teachings for daily living.

### **Faith Seeking Understanding: Ogren Room C-121**

Designed for the curious minds who want to wrestle with some of life's more difficult questions, such as: What does God have to say about the evil in the world? What happens when we die? Or, Is God against science? This discussion group looks to the Bible for answers.



## 11:30 AM Classes

### **Graduates (Ages 18-21): Hunt Room A-104/106**

A class for those out of high school and into college or the workforce: "Learning to Walk as Adults in Christ."

### **Purposeful Living: Maynard Prayer Parlor/C-200**

This class uses LifeWay's Explore the Bible curriculum to understand Scripture and to encourage members to embrace biblical principles for purposeful living.

### **Understanding Scripture: Ferguson Conference Room/C-206**

A study with open discussion of the Bible and its application to life.

### **BOD4GOD: Dickey TBD**

A Christ-centered Bible study designed to help students apply Biblical principles to better physical health.

### **The Gospel Project: Bradley, R. A100/102**

A God-centered mindset through which we can view the world, and answer many of the difficult questions we may come across in our lives.

### **Managing Our Finances God's Way: Carney (begins 7-week class, May 11-Jun 22) A-105**

Did you know that nearly half of Jesus' parables are about possessions? The Bible is packed with wise counsel about how to manage the financial blessings that God continues to bestow upon us. Parkwood is excited to announce a seven-week, video-based, small group study on biblical financial management in a personal or small group setting.

### **Way of Life: TBD**

This interactive class focuses on the study of biblical characters and lessons to be learnt from their life experiences.